



CENTURY 21.
Grenada Grenadines

Paula La Touche
Sales Associate

Office: (473) 440-5227
paula@c21grenada.com
<https://c21grenada.com>

CENTURY 21 Grenada Grenadines Real Estate, Excel Plaza, St.George, Grenada West Indies

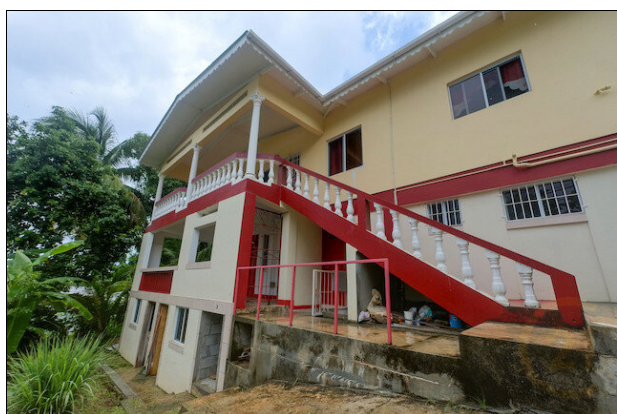
Turtle Curve

Gouyave (St.John) 📍 Grenada

MLS# 1151810

Single Family Homes

228,201



District/Area: Gouyave (St.John)

Region/Country: Grenada

Prop.Type: Single Family Homes

Prop.View: Ocean View

Beds: 6

Baths: 4½

Living Space: 2,200 ft²

Building Type: Detached

Year Built: 2002

Land Area: 6,000 ft²

Class: Residential

Features and Amenities

Condition

Recently Renovated
Well Maintained

Furnished

Partly Furnished

Security

Burglar Window Bars
Video Cameras

Yard / Landscaping

Land / Yard lined with hedges

Outdoor Features

Landscaped
Fruit Trees

Parking - Type

Driveway
Concrete Paved

Laundry

Laundry Room

Patio - Deck - Porch

Veranda

Appliances

Gas Stove
Refrigerator
Washer

Storage

Good Storage

Beach Access

Near Beach

Near By

School(s)
Shopping
Town
Church
Public Transportation

Rooms	Exterior Walls / Siding	Heating Source / Energy
Bedroom	Concrete	Electricity
Laundry Room		
Bathroom		
Guest Bath		
Storage		
Veranda		
Kitchen / Living / Dining		
Building - Framing	Location Features	Water Supply
Concrete Blocks	Public Transportation	City Supplied
		w/ Water Meter
		Water Tank
Floors	Building - Foundation	Roofing
Concrete	Concrete Block	Sheet Metal
Tiles		
Windows	Topography	Electric system
PVC	Flat	220 voltage
Sewage system	Driveway	Yard Aspect
Septic tank	Paved	West
	Concrete	
Bathroom	Window Style	Front Access Road
Shower Stall	Sliding Style	City Maintained
Sun Exposure		
West		

Remarks
The village of "Doctor Bell" is a small village on the outskirts of the town of Gouyave, St. John famous for its fishing. Built in 2002 with the lower levels added in 2017, this property is a 3-storey building that comprises on the upper level a two bedroom, with a third room that can be converted to an additional bedroom, one and a half bathrooms, kitchen/dining/living room that opens out onto a wrap around veranda with a partial view of the ocean in the distance. The middle floor also has a full two bedroom, one and a half bathroom apartment that can be used for income generation. There are tropical fruits on the land including Mangoes and Avocado.