



CENTURY 21.
Grenada Grenadines

Paula La Touche-Keller
Rental Associate

Office: (473) 440-5227
customercare@c21grenada.com
https://c21grenada.com

CENTURY 21 Grenada Grenadines Real Estate, Excel Plaza, St.George, Grenada West Indies

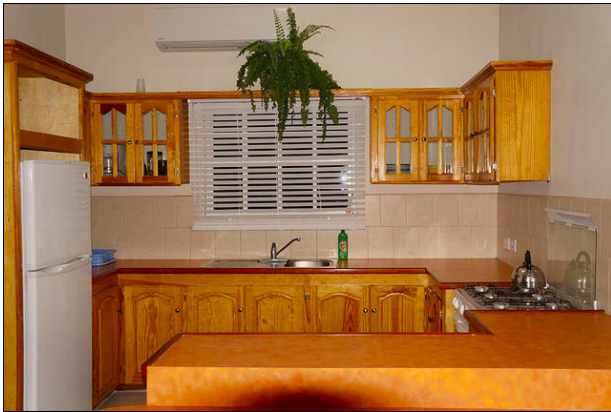
Saffron Suites

Lance aux Epines (St.George) 📍 Grenada

MLS# 1136512

Condos/Apartments

2,200



District/Area: Lance aux Epines (St.George)

Region/Country: Grenada

Prop.Type: Condos/Apartments

Prop.View: Mountain View

Beds: 3

Baths: 2.0

Living Space: 1,000 ft²

Building Type: Detached

Year Built: Estimated

Rental Term: Long Term Rental

Class: Residential

Features and Amenities

Appliances

Gas Stove
Refrigerator
Microwave

Security

Security Gate
Burglar Window Bars
Video Cameras

Beach Access

Near Beach

Furnished

Fully Furnished
House Wares

Air Conditioning

Air Conditioning
Screens
Multi-Zone
In Bedrooms Only

Yard / Landscaping

Fenced Yard
Garden

Parking - Type

Outdoor Parking

Laundry

Washer/Dryer in Unit

Near By

Church
Park - Green Area
University
Airport
Restaurants

Rooms

Kitchen
Living Room
Bedroom
Bathroom
Home Office
Veranda
Kitchen / Dining Room

Available Services

Water Heater

Distinctive Features

Walk-In Closet

Location Features

On Bus Route

Remarks

Available in June 2020. Clean and modern 3 bedroom / 2 bathroom apartment now available for rent in Lance Aux Epines. This apartment comes fully furnished and features a walk-in closet and home office. Air-condition is in all bedrooms, with a unit servicing the kitchen and the living room. Securely fenced, it is ideal for SGU students, corporate clients and faculty. Rent includes water, cooking gas and internet. Lance Aux Epines is an exclusive residential area located about 12 minutes drive from the city of St. George's and about 8 minutes drive to SGU.