

CENTURY 21
Grenada Grenadines

Renee La Touche
Rental Associate

Office: (473) 440-5227
renee@c21grenada.com
https://c21grenada.com

CENTURY 21 Grenada Grenadines Real Estate, Excel Plaza, St.George, Grenada West Indies

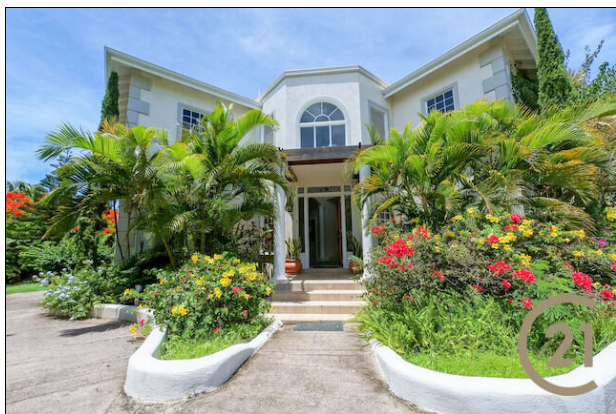
Elegant Villa

Lance aux Epines (St.George) 📍 Grenada

MLS# 1151740

Single Family Homes

5,000



District/Area: Lance aux Epines (St.George)

Region/Country: Grenada

Prop.Type: Single Family Homes

Prop.View: Inland View

Beds: 3

Baths: 3½

Living Space: 4,500 ft²

Building Type: Detached

Year Built: Estimated

Rental Term: Long Term Rental

Land Area: 21,780 ft²

Class: Residential

Features and Amenities

Condition

Brand New

Outdoor Features

Landscaped
Flower Garden

Appliances

Dishwasher
Microwave
Stove
Fridge + Water/Ice Dispenser

Furnished

Fully Furnished

Parking - Type

Indoor Parking

Storage

Good Storage

Air Conditioning

Split Level A/C

Laundry

Washer Only in Unit

Beach Access

Near Beach

Patio - Deck - Porch

Patio

Near By

School(s)
Town
Fitness Center
Church
Park - Green Area
University
Highway
Airport
Restaurants
Marina

Swimming Pool

Above Ground

Television	Rooms	Distinctive Features
Television Cable	Kitchen Utility Room Bedroom Master Bedroom Bathroom En-Suite Bath Home Office Living / Dining Room	Luxurious Walk-In Closet Open Concept
Exterior Walls / Siding	Heating Source / Energy	Building - Framing
Concrete	Solar energy	Steel & Concrete
Location Features	Water Supply	Floors
Quiet Area	City Supplied	Ceramic Tiles
Topography	Driveway	Bathroom
Flat	Paved	Ensuite Bathroom
Window Style		
Double-Hung Style		

Remarks

Modern designed contemporary house featuring high cathedral ceilings, spacious kitchen, designer furnishings , foyer, large patio and well manicured garden in Lance Aux Epines. It is walking distance to prickly Bay Marina and the Lance aux Epines beach. 10 minutes drive to the Airport.