



**CENTURY 21.**  
Grenada Grenadines

**Paula La Touche**  
Sales Associate

Office: (473) 440-5227  
[paula@c21grenada.com](mailto:paula@c21grenada.com)  
<https://c21grenada.com>

CENTURY 21 Grenada Grenadines Real Estate, Excel Plaza, St.George, Grenada West Indies

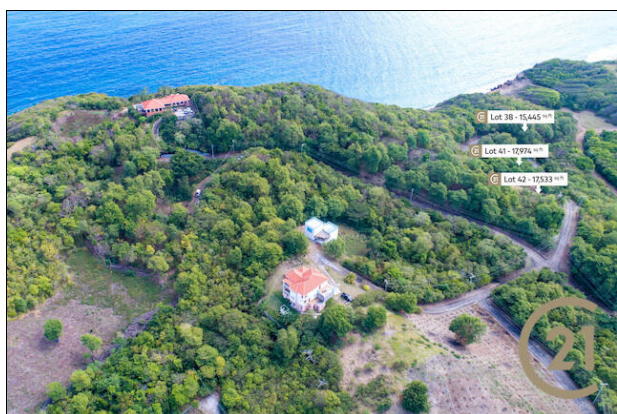
## Bedford Point Lot - 38, 41 - 44

Levera (St.Patrick) 📍 Grenada

**MLS# 1148217**

Vacant Land

**28,424**



**District/Area:** Levera (St.Patrick)

**Region/Country:** Grenada

**Prop.Type:** Vacant Land

**Prop.View:** Ocean View - Partial

**Land Area:** 15,445 ft<sup>2</sup>

**Class:** Residential

### Features and Amenities

#### Beach Access

Near Beach

#### Yard / Landscaping

Not landscaped

#### Near By

Agricultural Activities  
Woods

#### Location Features

Quiet Area  
No neighbours in the back

#### Topography

Sloped  
Flat

### Remarks

This exclusive residential Bedford Point Development is within walking distance of Bathway Beach and Levera Beach, north of the island or approximately hour to an hour and 15 minute drive from the international airport.

It is an ideal investment in an up-and-coming neighborhood with all the utilities in place.

Available Lots at XCD\$ 5 or USD\$ 1.84 per square foot.

Lot 38 - 15,445 sq ft (Partial Seaview)- Under Offer

Available Lots at XCD\$ 6.20 or USD\$ 2.28 per square foot.

Lot 41 - 17,974 sq ft (Inland View)-Under Offer

Lot 42 - 17,533 sq ft (Inland View)\_Under Offer

Lot 44 - 21,101 Sq.ft (Inland view)-Under Offer

