



**CENTURY 21.**  
Grenada Grenadines

**Paula La Touche**  
Sales Associate

Office: (473) 440-5227  
[paula@c21grenada.com](mailto:paula@c21grenada.com)  
<https://c21grenada.com>

CENTURY 21 Grenada Grenadines Real Estate, Excel Plaza, St.George, Grenada West Indies

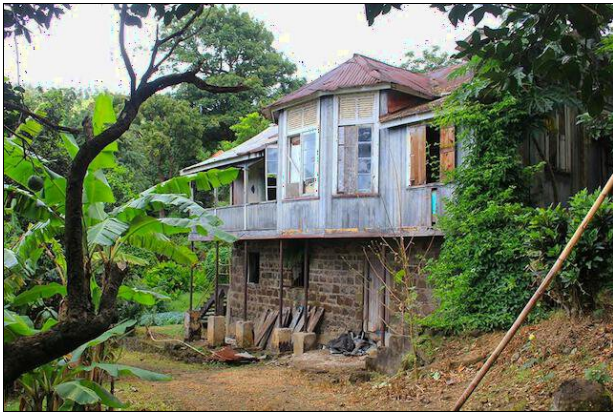
## Annandale Estate

Saint George (St.George) 📍 Grenada

**MLS# 1145521**

Vacant Land - Development

**2,000,000**



**District/Area:** Saint George (St.George)

**Region/Country:** Grenada

**Class:** Commercial

**Prop.Name:** Annandale Estate

**Land Area:** 107 Acres

**Prop.Type:** Vacant Land - Development

**Oper.Costs:**

### Features and Amenities

#### Near By

Agricultural Activities

#### Location Features

River access

Other

Accessible

### Remarks

Virgin estate property, in boundary with Grenada's popular Annandale Waterfalls. Many streams run through the property, and it also includes a spring. The land area measures approximately 107 Acres. Ideal for Eco project or development. An old historic 2bed home sits on this estate which can be restored.